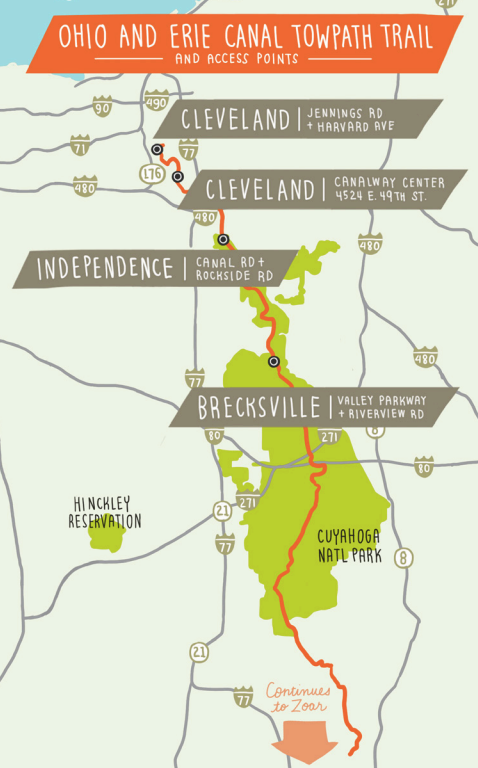


## OHIO AND ERIE CANAL TOWPATH TRAIL AND ACCESS POINTS



### RECREATIONAL BIKING

Cleveland's extensive Metroparks system and the Ohio & Erie Canal Towpath Trail offer dozens of miles of paved trails. The Towpath alone lets you bike all the way from Cleveland to Zoar, Ohio, more than 100 miles south.

### RIDE SMART, RIDE TOGETHER



#### RIDE ON THE ROAD

Let pedestrians rule the sidewalk, ride in the road.



#### FOLLOW THE RULES OF THE ROAD

Bikes are legal vehicles and should be treated and act as such.

**TIP:** All Cleveland buses are equipped with bike racks on their fronts. You can also take your bike on Rapid trains at all times, provided the train isn't too crowded. For longer trips, consider combining transit and biking.



### BIKING IN CLEVELAND: A GUIDE

copyright 2014

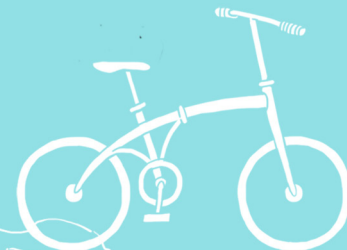
Support safer streets  
by joining the movement

[www.bikecleveland.org](http://www.bikecleveland.org)



Written by Justin Glanville.  
Designed and illustrated by Julia Kuo  
[www.the-beagle.com](http://www.the-beagle.com)

# Biking IN CLEVELAND



a POCKET GUIDE

Hello!

Cleveland is a great city to experience on a bike. We have walkable, historic neighborhoods and plenty to see and do. Biking in Cleveland: A Pocket Guide is here to help you to explore everything our city has to offer -- all from the comfort of your bike. You'll find useful resources, general tips, and information that will help make your visit a wonderful and fun experience.

Oh, and don't forget to support safer streets for cycling by becoming a card carrying member of Bike Cleveland. Learn more at [BikeCleveland.org/member](http://BikeCleveland.org/member). Ride safely, legally, and as often as you can. Be visible, courteous, and have fun!

*-Your friends at Bike Cleveland*

## EUCLID AVENUE BIKE LANE



### HOW DO I GET FROM DOWNTOWN TO...

#### UNIVERSITY CIRCLE (4 MILES)

Home to The Cleveland Museum of Art, Severance Hall (The Cleveland Orchestra), Case Western Reserve University and Cleveland's Little Italy.

#### ROUTE 1 (FAST):

Take Euclid Avenue, one of Cleveland's main thoroughfares, east from Public Square. It has striped bike lanes from E. 22nd to Stokes Blvd.

#### ROUTE 2 (LAKE AND GARDENS):

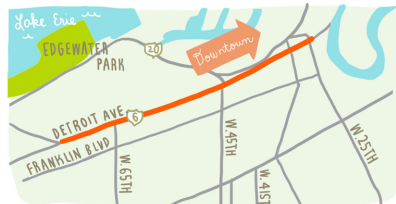
Take the signed (but not striped) Cleveland Lakefront Bikeway, which follows North Marginal Road east from Browns Stadium. Turn right onto MLK Boulevard, which winds through beautiful Rockefeller Park and the Cleveland Cultural Gardens.

## HINGETOWN (1.5 MILES) AND GORDON SQUARE (2.5 MILES)

In Hingetown (Detroit and W. 29th Street), you'll find shops and The Transformer Station, the west side outpost of The Cleveland Museum of Art. Gordon Square (Detroit and W. 65th Street) is a performing arts district, home to an experimental theater company, a community theater and an independent cinema.

Take Superior Avenue west from Public Square. You'll cross the Detroit-Superior Bridge (bike lanes), which puts you on Detroit Avenue (bike lanes). Take this to W. 29th Street for Hingetown and to W. 65th Street for Gordon Square.

## DETROIT AVENUE BIKE LANE



## BIKE RENTALS

### THE BIKE RACK 2148 E. 4th St.

The region's first full service bicycle parking and commuter center, offering bike rentals.

**Rental Price:** \$5 per hour or \$20 per day.  
(216) 771-7120 | [clevelandbikerack.com](http://clevelandbikerack.com)

### OHIO CITY BICYCLE CO-OP 1840 Columbus Rd.

The region's bicycle education center offers bike rentals, trailer rentals and much more to get you riding.

**Rental Price:** start at \$7 per hour, \$25 per day and \$75 per week. (216) 830-2667 | [ohiocitycycles.org](http://ohiocitycycles.org)

## BIKE TOURS

**CLEVELAND BIKE TOURS** Offering leisurely bike tours of the city. Packed with fun facts and interesting history, these tours are the perfect summertime activity for families and friends. They also have rental bikes. (330) 532-8687 | [ClevelandBikeTours.com](http://ClevelandBikeTours.com)

**BOB'S BIKE TOURS** Offering informative and casual guided bicycle tours of Downtown Cleveland, Ohio City, Tremont, and surrounding areas since 2011. All tours include bicycle, helmet and water. (440) 681- 8262 | [BobsBikeTours.com](http://BobsBikeTours.com)